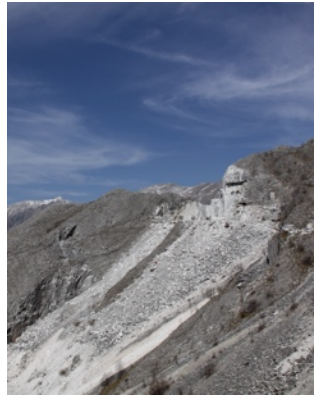


# VESPA RIDING ACROSS TUSCANY

Trip planner

Your Vespa is waiting for you...  
Marble quarries - a view from passo del Vestito.  
A Winter day on the Versilia coast  
Art exhibition in Pietrasanta - Piazza del Duomo



## Versilia coast

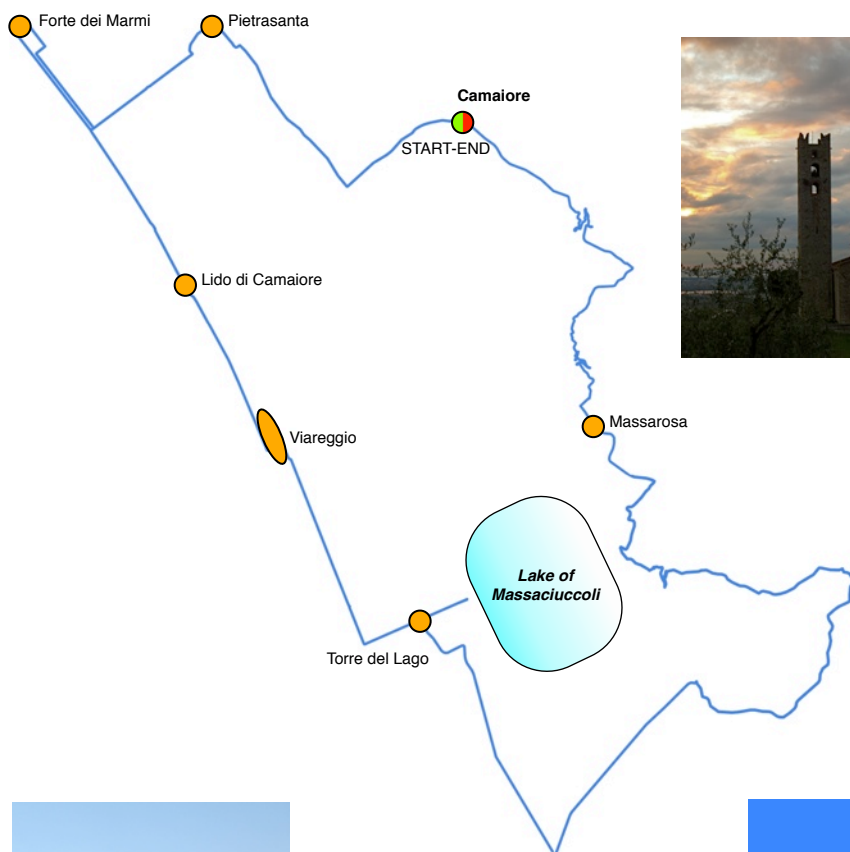
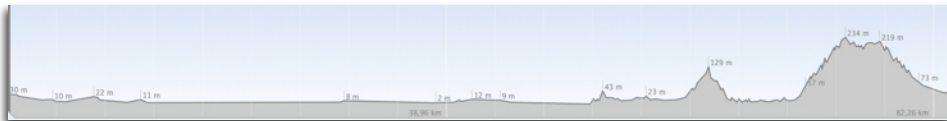
Discover the beauty of the Tuscan countryside riding a Vespa through one of the most fascinating parts of our region. You will drive across the woods and the hills discovering little churches and ancient remains off the beaten track, taking in breathless views over the endless stretches of golden sandy beaches backed by mountains and fragrant colourful vegetation of the Versilia coast , the sheer cliffs, bays and enchanting small beaches of the Ligurian Riviera coastline or over the lush vineyards and olive groves of the famous rolling hills of Tuscany. Enjoy the unique feeling of being hosted in a beautiful mansion-house close to the cities and the beaches yet set in a tranquil secluded location far from the crowd.

## DAY ONE

## VERSILIA COAST TOUR

Itinerary N°1 Km 86,80:

Camaioire Countryside and the Versilia Coast through the hillside area of Camaioire and Pietrasanta to the sea-front road through Forte dei Marmi, Viareggio and the lake side of Lago di Massaciuccoli....



**Clockwise:**  
Pieve a Elici,  
Viareggio  
and Nozzano  
Castello.

## DAY TWO

### LUCCA AND THE VILLE LUCCHESI

Itinerary N°2 Km 106,60:

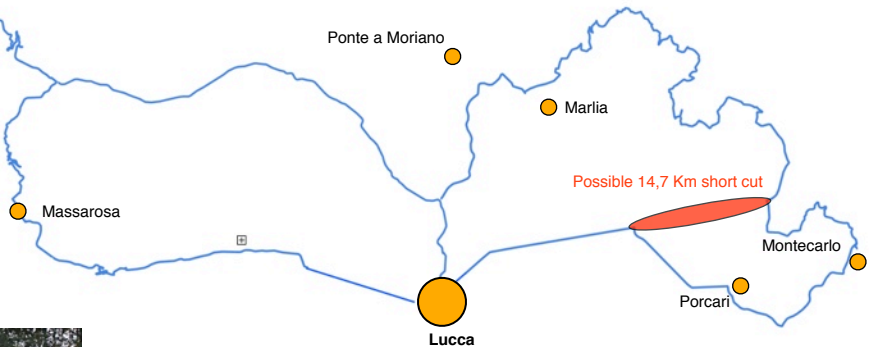
Roundtrip up through the hillside area in between Versilia and Lucca, sightseeing inside the beautiful walled town of Lucca, chance to have lunch in a typical restaurant in the historical centre and after a short drive, visit to the 16 th/17 th century villas spread among the vineyards and olive groves, for which Lucca is worldwide renowned. Wine tasting and visit to a cellar.



START-END



Camaiole



**From right to left:**

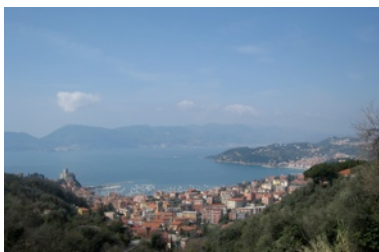
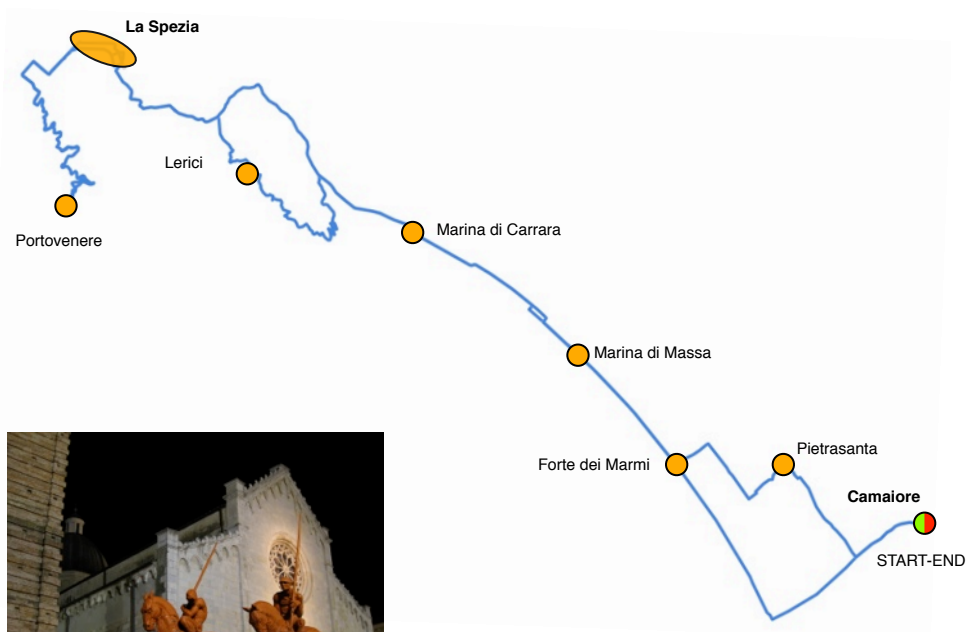
Montecarlo and his vineyards and San Michele church in Lucca, follow the signs...

## DAY THREE

### LERICI AND PORTOVENERE

Itinerary N°3 Km 140,45:

Round trip through the Northern part of the Versilia coast to the Ligurian Rivera to visit the beautiful fishing villages of Lerici and Portovenere.



**Clockwise:**  
Portovenere,  
Lerici and its  
gulf, Exhibition  
in piazza del  
Duomo in  
Pietrasanta.

## DAY FOUR

### MARBLE TOUR

Itinerary N°4 Km 93,20:

Round trip through the Alpi Apuane mountains and the marble quarries of the Northern part of Versilia up to the green mountains of Garfagnana a scenic itinerary with the possibility to taste local products and a good glass of wine (no more, you are driving).



**Clockwise:**  
Forte dei  
Marmi, Antona  
village and the  
sea, getting  
close to Passo  
del Vestito

The **Vespa LX** offers a blend of classic style, round headlamp and rear-view mirrors in chrome-plated steel are a style statement straight out of Vespa history, and sharp edge modern design. The all-steel body sets the Vespa LX apart from any other scooter produced today and offers unmatched rigidity and steering precision. The saddle height gives riders of any height perfect control of the vehicle and the 11inch front wheel

guarantees greater stability and pinpoint steering. The braking system, powerful 200mm front disc brake, ensures stability and a smooth ride.

<b>Engine</b>	LEADER 4 stroke, single cylinder
<b>Displacement</b>	124,02 cc
<b>Bore</b>	57 mm
<b>Stroke</b>	48,6 mm
<b>Max Power</b>	7.6 Kw (10.3 bhp) at 8,000 rpm
<b>Max Torque</b>	9.6 Nm at 6,000 rpm
<b>Fuel</b>	Unleaded petrol N.O.R. min. 95
<b>Induction</b>	SOHC
<b>Ignition</b>	Electronic CDI and variable timing
<b>Starter</b>	Electric and kick starter
<b>Lubrication</b>	Wet pump with cup capacity of 1 litre, chain driven lobe pump
<b>Cooling</b>	Forced air
<b>Gear change</b>	Automatic CVT with torque server
<b>Clutch</b>	Automatic centrifuge type
<b>Frame</b>	Pressed steel monocoque
<b>Front suspension</b>	Oscillating arm with helicoidal spring and hydraulic double effect single damper
<b>Rear suspension</b>	Helicoidal adjustable spring and hydraulic double effect single damper
<b>Front brake</b>	Ø 200 mm stainless steel disc with dual piston hydraulic calliper
<b>Rear brake</b>	Ø 110 mm drum, mechanically commanded
<b>Front wheel rim</b>	Die-cast aluminium alloy, 2.50 - 11"
<b>Rear wheel rim</b>	Die-cast aluminium alloy, 3.00 - 10"
<b>Front tyre</b>	Tubeless 110/70 - 11"
<b>Rear tyre</b>	Tubeless 120/70 - 10"
<b>Length</b>	1,800 mm
<b>Width</b>	740 mm
<b>Wheel base</b>	1,280 mm
<b>Saddle height</b>	775 mm
<b>Dry weight</b>	110 kg
<b>Fuel tank cap.</b>	8,6 litres
<b>Power</b>	CV 12 (Kw 8.8) at 8,000 rpm
<b>Maximum speed</b>	91 Km/hour


**PHOTOS:**

Vespa LX  
125cc.

**CHART:**

**Vespa-**  
Technical  
information



Organized by:

**Versiliana Viaggi di Vita Toscana S.r.l.**

Via Padre Eugenio Barsanti, 63-65

55045 Pietrasanta (LU) - P.IVA: 01575150469

Tel. 0584-36541 - Fax 0584-365430 -

E-mail: [info@versilianaviaggi.it](mailto:info@versilianaviaggi.it) - [www.versilianaviaggi.it](http://www.versilianaviaggi.it)



Tour designer, Vespa hire and technical support by:

**ECO-RENT di Papini Daniele**

Via Tosco Romagnola, 1321

56023 - San Casciano di Cascina (PI) Italy

Tel +39 050 777461 - Fax +39 050 6140064

E-mail: [info@ecorent.net](mailto:info@ecorent.net) - [www.ecorent.net](http://www.ecorent.net)